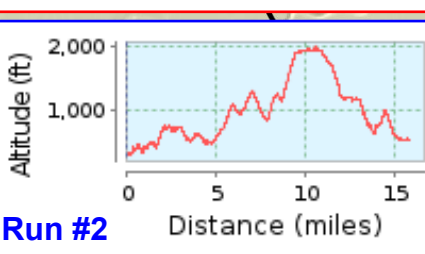
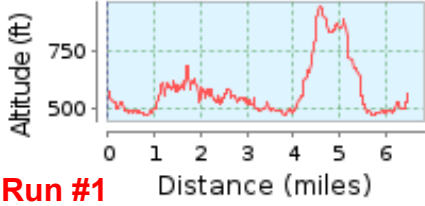
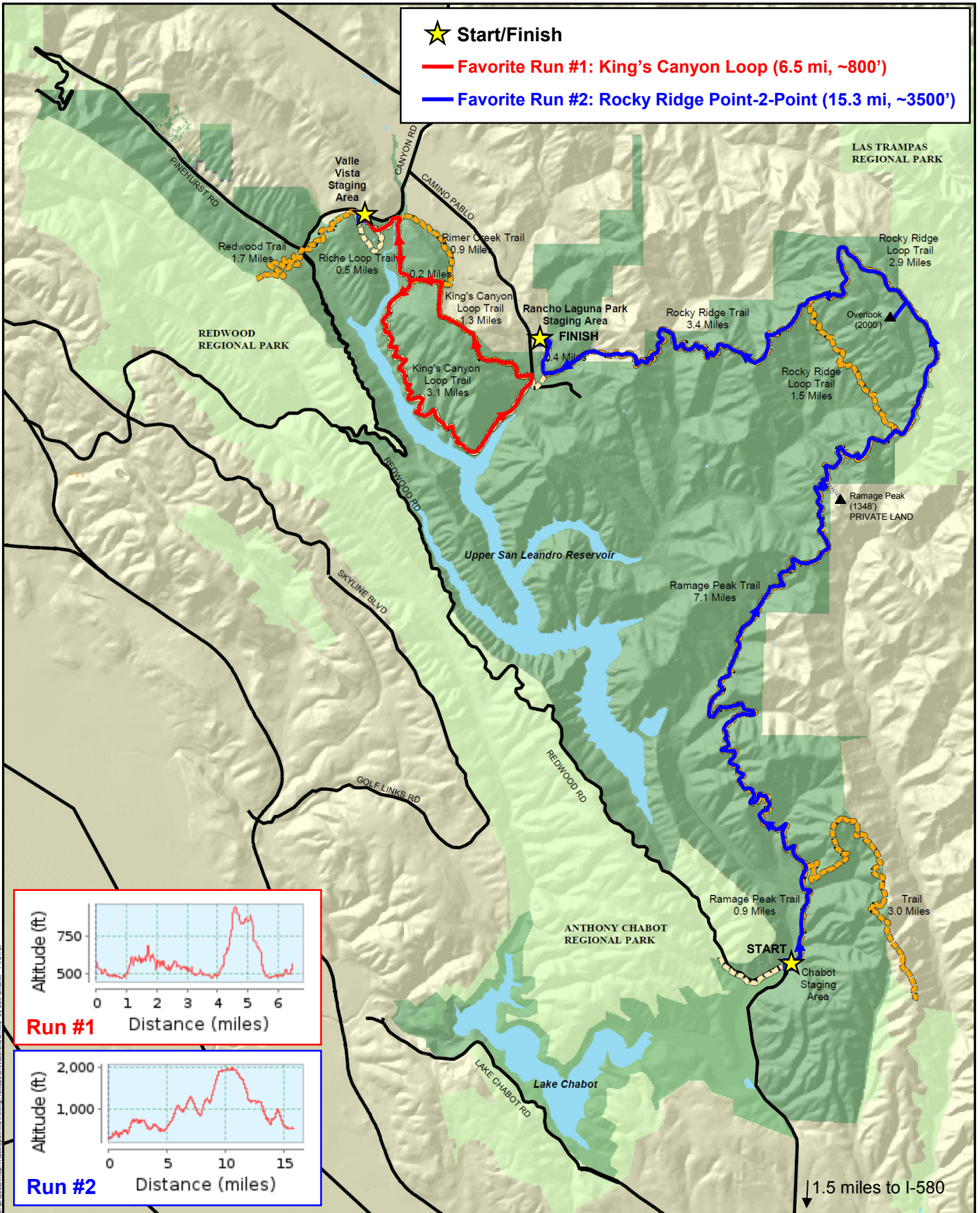


★ Start/Finish

— Favorite Run #1: King's Canyon Loop (6.5 mi, ~800')

— Favorite Run #2: Rocky Ridge Point-2-Point (15.3 mi, ~3500')



Copyright © 2017 EBMUD. All rights reserved. Map data by Esri, DeLorme, Garmin, etc. 1/10/17

- Trail Entry
- EBMUD Property
- EBMUD Trail
- EBRPD Property
- Dog Trail

Trails Around Lake Chabot and Upper San Leandro Reservoir

