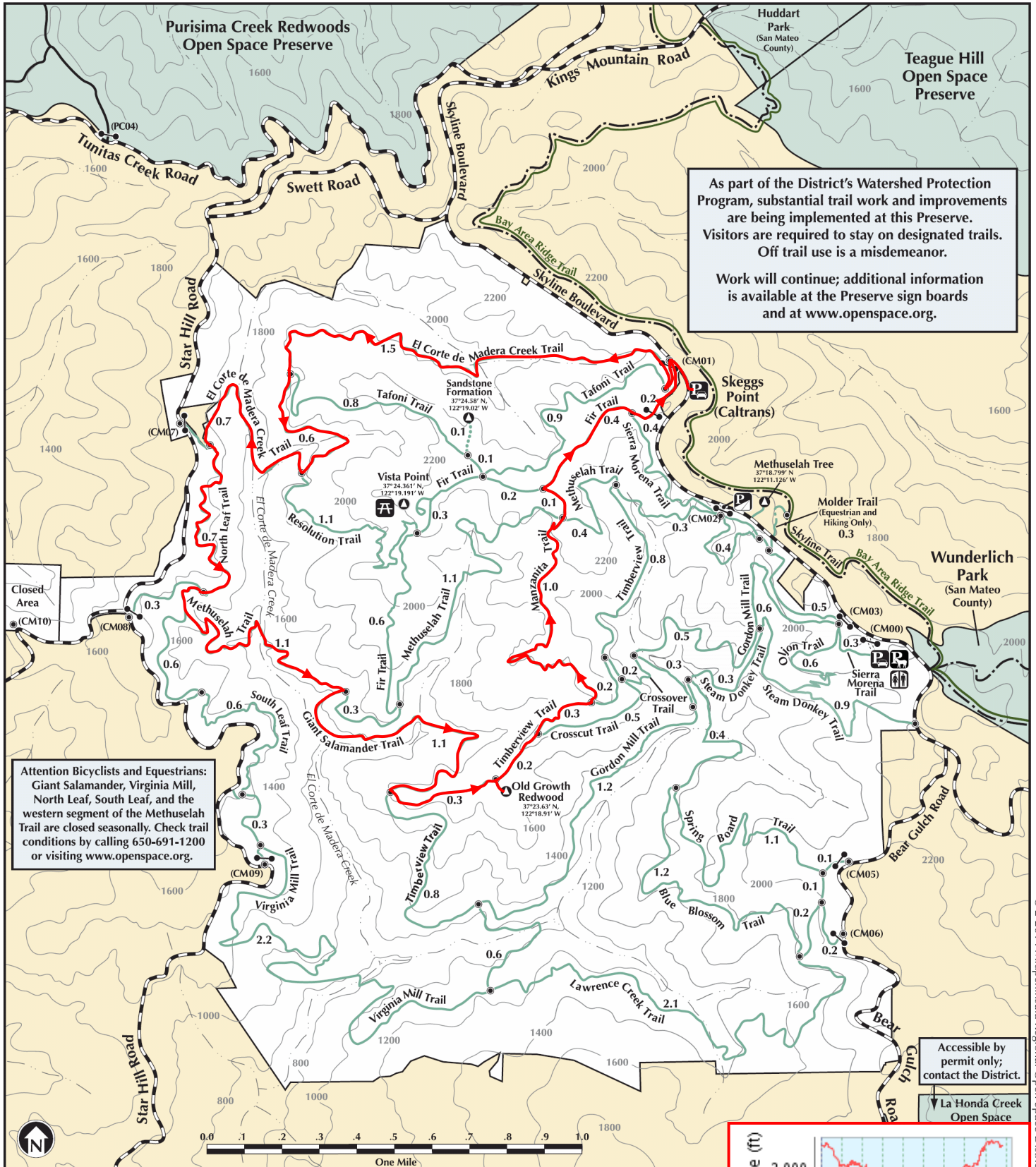


El Corte de Madera Creek

Open Space Preserve



As part of the District's Watershed Protection Program, substantial trail work and improvements are being implemented at this Preserve. Visitors are required to stay on designated trails. Off trail use is a misdemeanor.

Work will continue; additional information is available at the Preserve sign boards and at www.openspace.org.

Attention Bicyclists and Equestrians:
Giant Salamander, Virginia Mill, North Leaf, South Leaf, and the western segment of the Methuselah Trail are closed seasonally. Check trail conditions by calling 650-691-1200 or visiting www.openspace.org.

Accessible by permit only; contact the District.
La Honda Creek Open Space

★ Start/Finish
— Favorite Run #1: Stink-foot (8.8 mi, ~1600')

