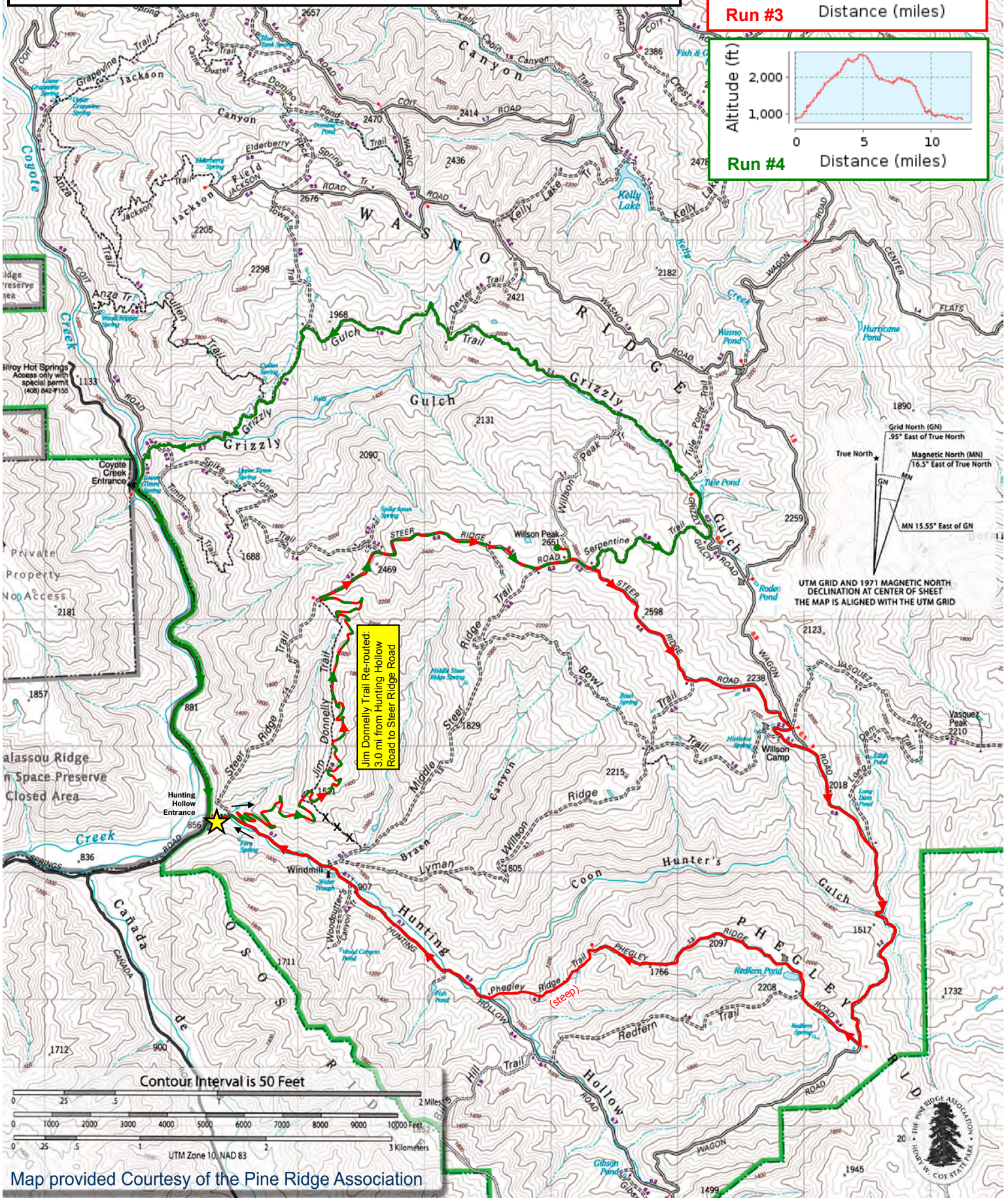
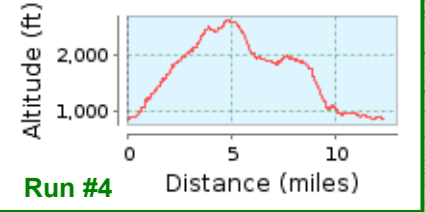
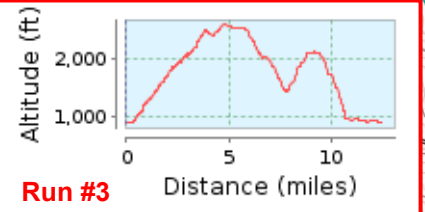


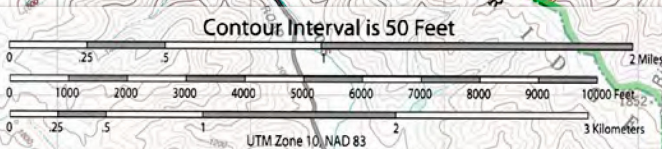
★ Start/Finish

— Favorite Run #3: Wilson Camp Loop (12.9 miles, ~2600')

— Favorite Run #4: Grizzly Gulch Loop (12.4 miles, ~2200')



UTM GRID AND 1971 MAGNETIC NORTH DECLINATION AT CENTER OF SHEET THE MAP IS ALIGNED WITH THE UTM GRID



Map provided Courtesy of the Pine Ridge Association

